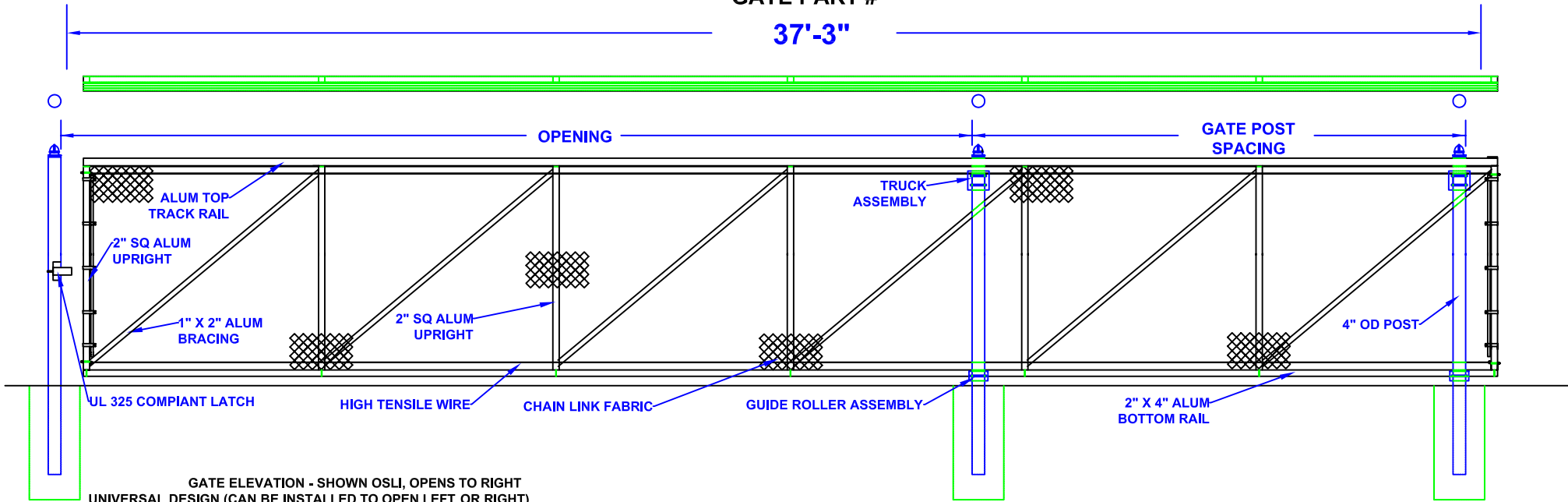


23'-26' X 6' HIGH ALUMINUM SLIDE GATE (ASG-266)

GATE PART #

37'-3"



GATE ELEVATION - SHOWN OSLI, OPENS TO RIGHT
UNIVERSAL DESIGN (CAN BE INSTALLED TO OPEN LEFT OR RIGHT)

- Notes.
1. SPECIFICATIONS CAN BE CHANGED BY SHARON FENCE COMPANY ONLY.
 2. FOOTING TO BE (4)X POST WIDTH. MIN DEPTH TO BE 36" [914 MM].
 3. GATES MAY BE MANUALLY OR ELECTRICALLY OPERATED. HARDWARE WILL VARY.
 4. GATES TABULATED ARE UL-325 COMPLIANT.
 5. GATES ARE UNIVERSAL (OPEN TO LEFT OR RIGHT).
 6. TOP TRACK AND RAIL: ENCLOSED 1-PC ALUMINUM (6061-T6) EXTRUSION (3.83 LBS PER LF) REINFORCED BY WELDING AN ADDITIONAL 2" SQ. ALUMINUM LATERAL SUPPORT RAIL.
 7. 1" X 2" ALUMINUM DIAGONAL BRACING WELDED TO 2" SQUARE UPRIGHTS.

OPENING	GATE POST SPACING
23'	14'-0"
24'	13'-0"
25'	12'-0"
26'	11'-0"

Approved By: _____

Date: _____