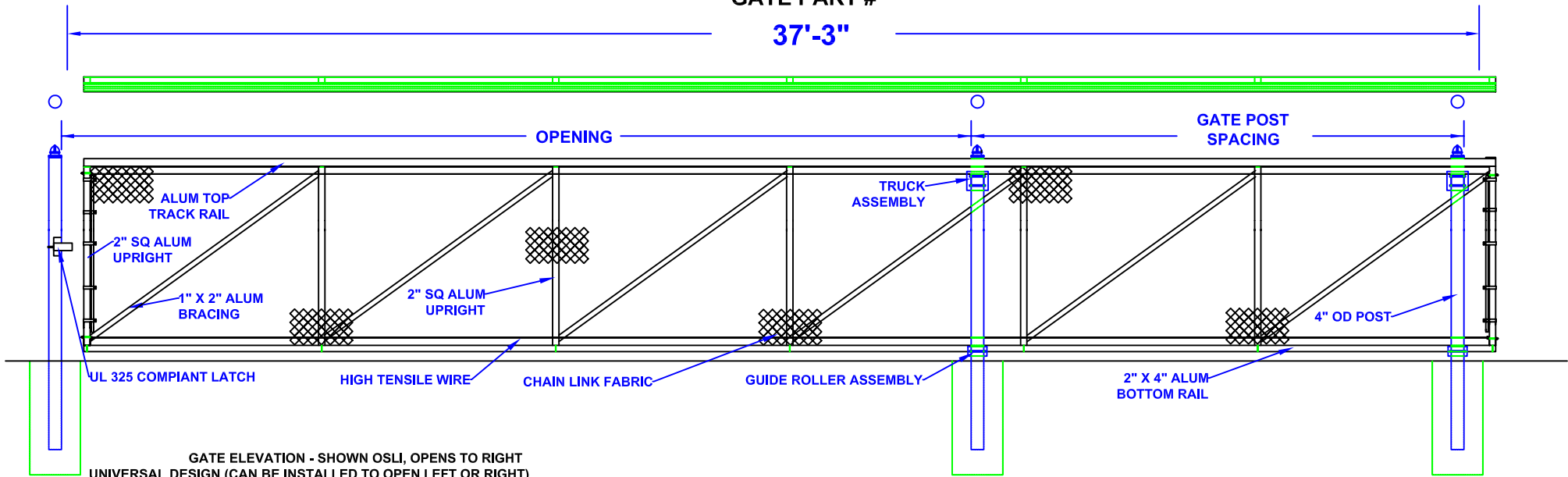


23'-26' X 5' HIGH ALUMINUM SLIDE GATE (ASG-265)

GATE PART #

37'-3"



Notes.

1. SPECIFICATIONS CAN BE CHANGED BY SHARON FENCE COMPANY ONLY.
2. FOOTING TO BE (4)X POST WIDTH, MIN DEPTH TO BE 36" [914 MM].
3. GATES MAY BE MANUALLY OR ELECTRICALLY OPERATED. HARDWARE WILL VARY.
4. GATES TABULATED ARE UL-325 COMPLIANT.
5. GATES ARE UNIVERSAL (OPEN TO LEFT OR RIGHT).
6. TOP TRACK AND RAIL: ENCLOSED 1-PC ALUMINUM (6061-T6) EXTRUSION (3.83 LBS PER LF) REINFORCED BY WELDING AN ADDITIONAL 2" SQ. ALUMINUM LATERAL SUPPORT RAIL.
7. 1" X 2" ALUMINUM DIAGONAL BRACING WELDED TO 2" SQUARE UPRIGHTS.

OPENING

- 23'
- 24'
- 25'
- 26'

GATE POST SPACING

- 14'-0"
- 13'-0"
- 12'-0"
- 11'-0"

Approved By: _____

Date: _____