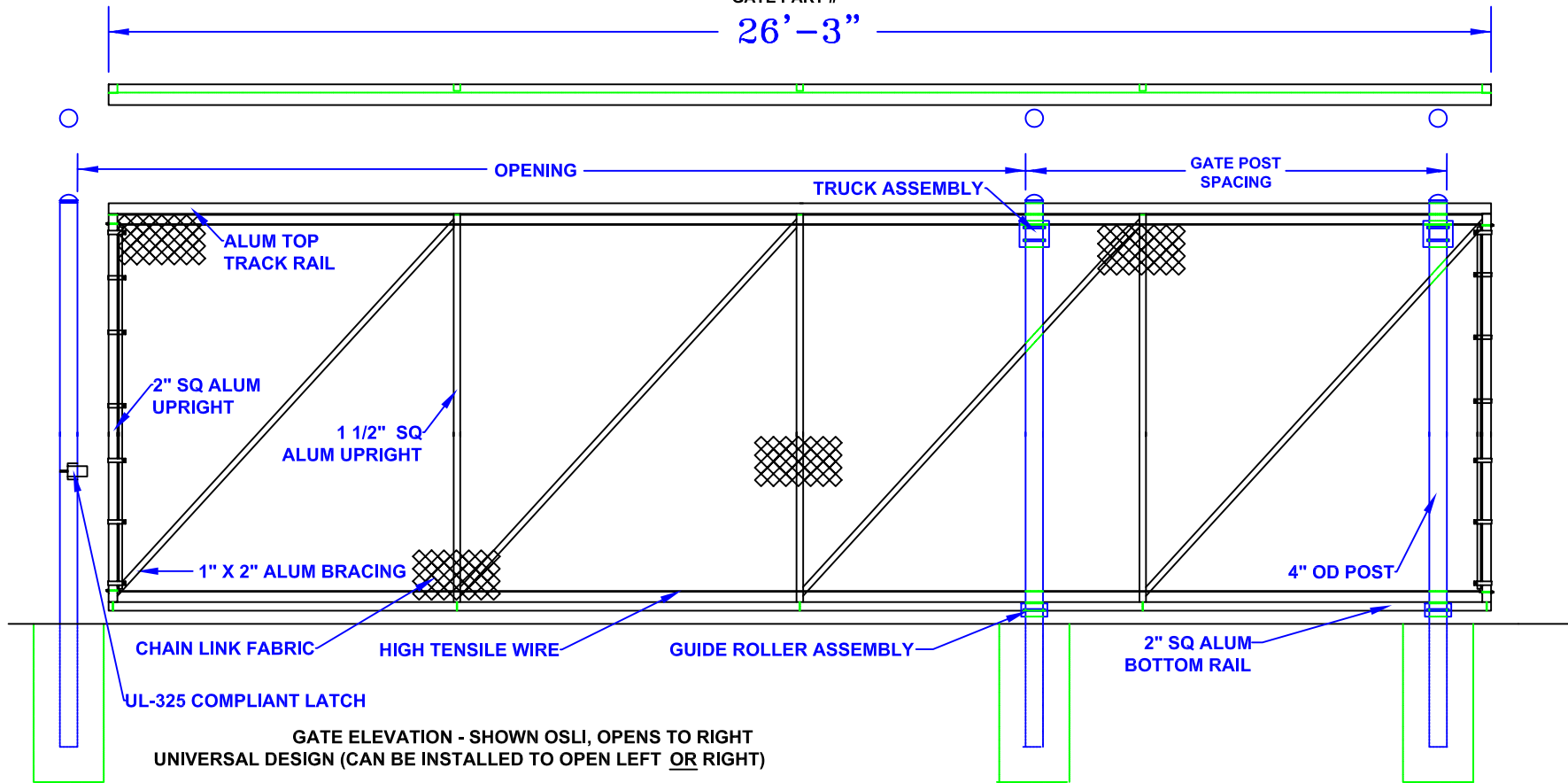


15' - 18' x 8' ALUMINUM SLIDE GATE (ASG-188)

GATE PART #

26'-3"



Notes:

- SPECIFICATIONS CAN BE CHANGED BY SHARON FENCE COMPANY ONLY.
- FOOTING TO BE (4)X POST WIDTH. MIN DEPTH TO BE 36" [914 MM].
- GATES MAY BE MANUALLY OR ELECTRICALLY OPERATED. HARDWARE WILL VARY.
- GATES TABULATED ARE UL-325 COMPLIANT.
- GATES ARE UNIVERSAL (OPEN TO LEFT OR RIGHT).
- TOP TRACK AND RAIL: ENCLOSED 1-PC ALUMINUM (6061-T6) EXTRUSION (3.83 LBS PER LF)
- 1" x 2" ALUMINUM DIAGONAL BRACING WELDED TO 2" SQUARE ALUMINUM UPRIGHTS.

OPENING

15'
16'
17'
18'

GATE POST SPACING

11'-0"
10'-0"
9'-0"
8'-0"

Approved By: _____

Date: _____