

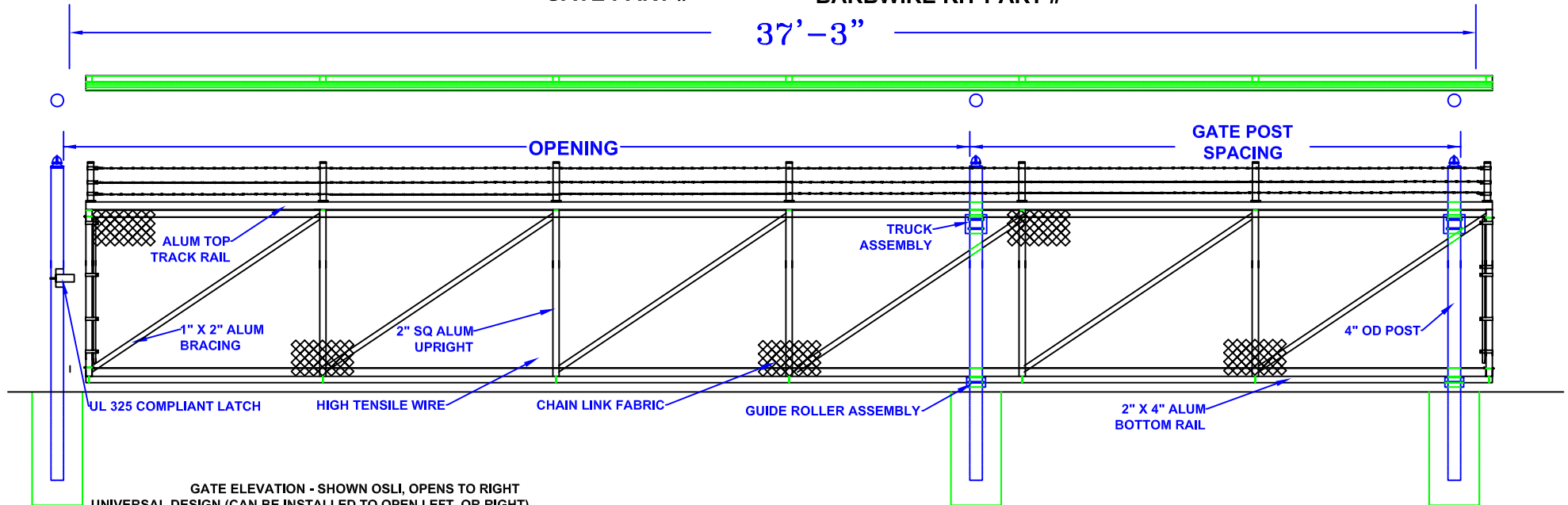
23'-26' X 5' HIGH ALUMINUM SLIDE GATE

(ASG-265) (ASG-BW26)

GATE PART #

BARBWIRE KIT PART #

37'-3"



GATE ELEVATION - SHOWN OSLI, OPENS TO RIGHT
UNIVERSAL DESIGN (CAN BE INSTALLED TO OPEN LEFT OR RIGHT)

Notes.

1. SPECIFICATIONS CAN BE CHANGED BY SHARON FENCE COMPANY ONLY.
2. FOOTING TO BE (4)X POST WIDTH, MIN DEPTH TO BE 36" [914 MM].
3. GATES MAY BE MANUALLY OR ELECTRICALLY OPERATED. HARDWARE WILL VARY.
4. GATES TABULATED ARE UL-325 COMPLIANT.
5. GATES ARE UNIVERSAL (OPEN TO LEFT OR RIGHT).
6. TOP TRACK AND RAIL: ENCLOSED 1-PC ALUMINUM (6061-T6) EXTRUSION (3.83 LBS PER LF) REINFORCED BY WELDING AN ADDITIONAL 2" SQ. ALUMINUM LATERAL SUPPORT RAIL.
7. 1" X 2" ALUMINUM DIAGONAL BRACING WELDED TO 2" SQUARE UPRIGHTS.

OPENING

23'
24'
25'
26'

GATE POST SPACING

14'-0"
13'-0"
12'-0"
11'-0"

Approved By: _____

Date: _____