



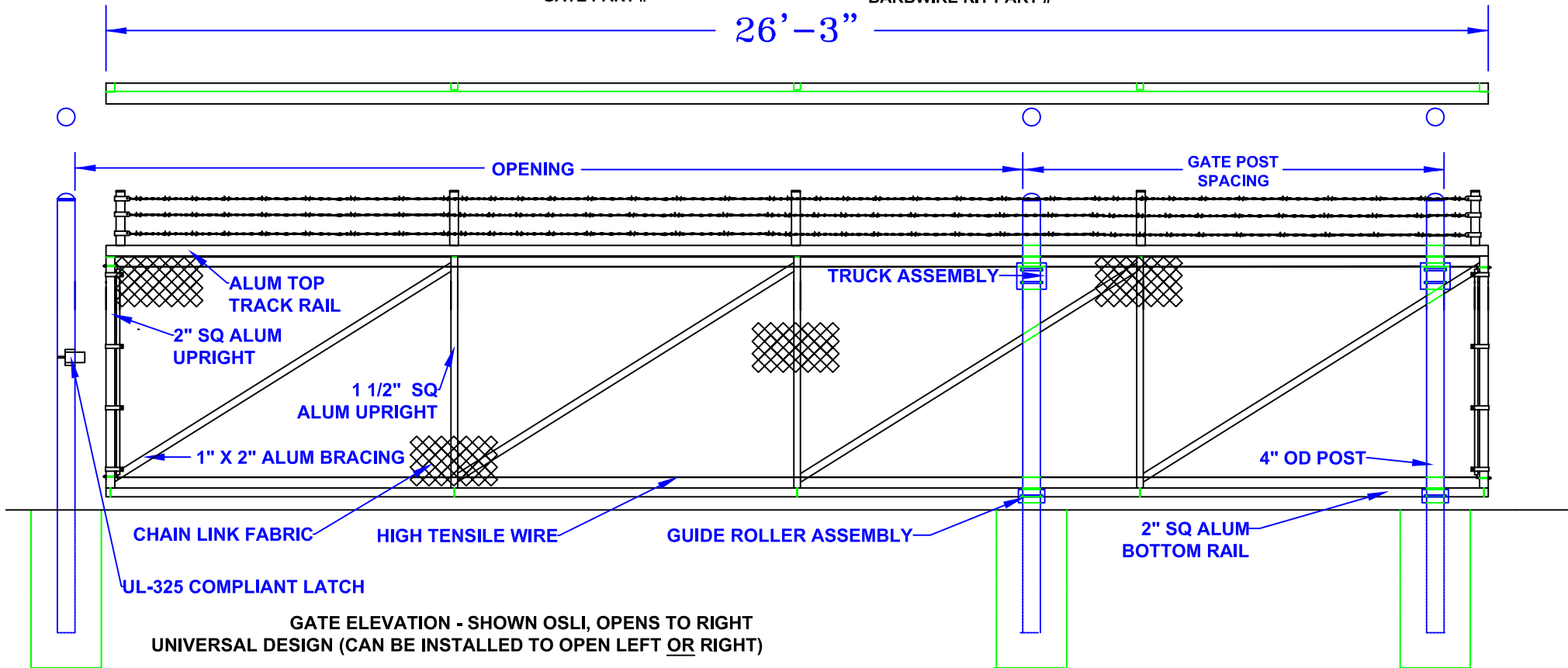
15' - 18' x 5' ALUMINUM SLIDE GATE

(ASG-185)

GATE PART #

(ASG-BW18)

BARBWIRE KIT PART #



Notes:

1. SPECIFICATIONS CAN BE CHANGED BY SHARON FENCE COMPANY ONLY.
2. FOOTING TO BE (4)X POST WIDTH. MIN DEPTH TO BE 36" [914 MM].
3. GATES MAY BE MANUALLY OR ELECTRICALLY OPERATED. HARDWARE WILL VARY.
4. GATES TABULATED ARE UL-325 COMPLIANT.
5. GATES ARE UNIVERSAL (OPEN TO LEFT OR RIGHT).
6. TOP TRACK AND RAIL: ENCLOSED 1-PC ALUMINUM (6061-T6) EXTRUSION (3.83 LBS PER LF)
8. 1" x 2" ALUMINUM DIAGONAL BRACING WELDED TO 2" SQUARE ALUMINUM UPRIGHTS.

OPENING	GATE POST SPACING
15'	11'-0"
16'	10'-0"
17'	9'-0"
18'	8'-0"

Approved By: _____

Date: _____